



# DRYER REPLACEMENT

Download Catalog



## LG® Replacement Parts



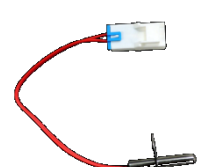
Igniter  
can replace  
5318EL3001A  
PT# SDE365



Lint Screen  
can replace  
5231EL1002E  
PT# DE1002E



Dryer Door Catch  
can replace  
4027EL1001A  
PT# DE1001A



Thermistor  
can replace  
6323EL2001B  
PT# TH2001B



SUPCO® Drum  
Roller  
can replace  
4851EL2002A  
PT# DE2002A



Door Switch  
can replace  
6601EL3001A  
PT# ES3001A



Idler Pulley  
can replace  
4560EL3001A  
PT# DE3001A



Blower Motor  
can replace  
4681EL1008A  
PT# SM1008



Idler Arm  
can replace  
4561EL3002A  
PT# DE3002A



SUPCO® Blower  
Wheel  
can replace  
5835EL1002A  
PT# DE1002A

## Samsung® Replacement Parts



SUPCO® Thermal  
Fuse  
can replace  
DC96-00887A  
PT# L0887A



SUPCO® Thermistor  
can replace  
DC32-0007A  
PT# DE0007A



SUPCO® Drum Belt  
can replace  
6602-001655  
PT# LB1655



SUPCO® Drum  
Roller  
can replace  
DC97-075238  
PT# DE7523



SUPCO® Dryer  
Igniter  
can replace  
DC47-00022A  
PT# SDE366

OVER 150 COMPONENTS @WWW.SUPCO.COM

# AIR FORCE 1

SALES & MARKETING LTD.

Experience. Integrity. Focus. Respect.

40 IRONSIDE CRES UNIT 2, TORONTO, ON M1X 1G4  
1.800.707.6297 TOLL FREE  
416.299.1300 / 647.343.4145 FAX / orders@airforce1.ca

# AIR FORCE 1

SALES & MARKETING LTD.

1.800.707.6297 TOLL FREE

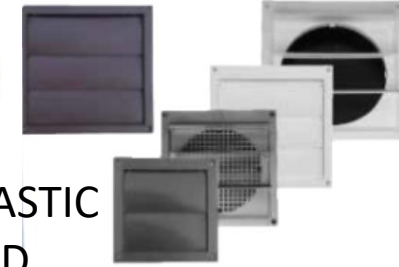
## DRYER EXHAUST & REPLACEMENT PARTS



DV4 – DRYER/EXHAUST VENT



LOUVERED PLASTIC  
VENT HOOD



KEEP YOUR DRYER EXHAUST SAFE & EFFICIENT



The LintAlert® enhances your home safety plan by monitoring the dryer exhaust system for problems. As lint naturally builds up over time, LED indicators progressively illuminate to show how efficiently your dryer is operating. When airflow restriction becomes dangerous, an alarm is triggered.



As lint naturally builds up over time, LEDs illuminate. When flow restriction gets dangerous, an alarm sounds.

PT#ALRT3

## FIRE RESISTANT Aluminum Dryer Duct



4' PT# DFLX4  
8' PT# DFLX8



Fire Resistant Flexible Hose



THE RIGHT CHOICE



DRYER  
COMPONENTS



## QUALITY LINT TRAPS



4"Vent  
PT# ULT180  
4"Vent x 5"  
Vent  
PT# ULT180-45  
4"Vent 90  
degree  
PT# ULT90-44



## DRYER BOOSTER 4" IN LINE FAN

PT#VTX400



## AMP SENSOR RELAY FOR BOOSTER FAN



PT# FCS003

### Dryer/Exhaust Vent DV4

The Primex Dryer/Exhaust Vent (DV4) is a simple, durable and aesthetically-pleasing solution for venting residential dryers.

The low-profile, one-piece design accommodates standard 4-inch ducting. UV-stabilized polymer resin offers long-lasting protection while eliminating leaky seams on the vent hood.



**Hood Size** H: 7.1" W: 7.1" D: 3.3"  
**Colours** Snow White (01) / Taupe (23)

### Surface Mount Wall Vents SM Series

The Primex Surface Mount Wall Vent (SM Series) is the perfect replacement for existing bathroom or range hood exhaust terminations.

The seamless, low-profile, one-piece design accommodates standard 4-6 inch ducting. SM Series is spring loaded to reduce flapping noise.

\*Remove screen for dryer applications.



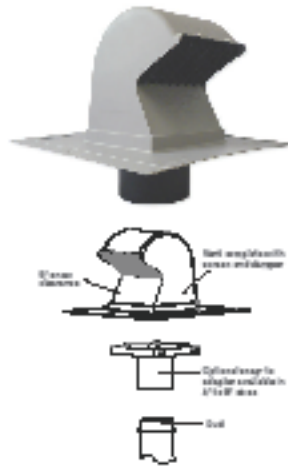
**Sizes** 4, 5, 6 INCH

### Goose-Neck Roof Vent RV28

The Primex Goose-Neck Roof Vent (RV28) is built for the through-roof exhaust of dryers, bathroom and kitchen fans, stove vents, and intake for furnaces, fresh air makeup, and attic venting.

This patented, durable, watertight roof vent is easily installed and adapted to fit 4, 5, 6, 7 or 8-inch ducting (with optional adapter) for a perfect fit every time.

\*Remove screen for dryer applications.



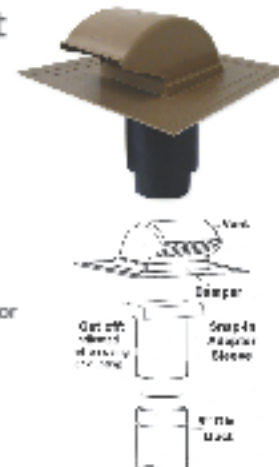
**Hood Size** H: 15.7" W: 15.3" D: 9.5"

### Low-Profile Roof Vent RV20NS

The Primex Low-Profile Roof Vent (RV20) is built for the through-roof exhaust of dryers, bathroom and kitchen fans, stove vents, and intake for furnaces, fresh air make-up, and attic venting.

This patented, durable, watertight roof vent is easily installed and adapted to fit 4, 5 or 6-inch ducting for an aesthetically-pleasing, perfect fit every time.

\*Order no screen version for dryer applications.

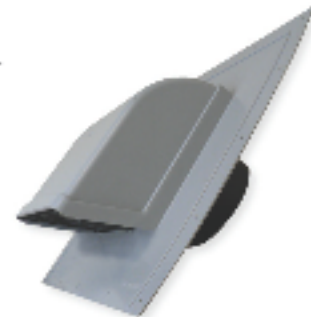


**Hood Size** H: 6.5" W: 7" D: 4.9"

### Low-Profile Roof Vent RVL28

The Primex Low-Profile Roof Vent (RVL28) is built for the exhaust of dryers, bathroom/kitchen fans, stove vents, and intake for furnaces, fresh air make-up, and attic venting. The 4 to 8-inch adapters are sold separately.

\*Remove screen for dryer applications.

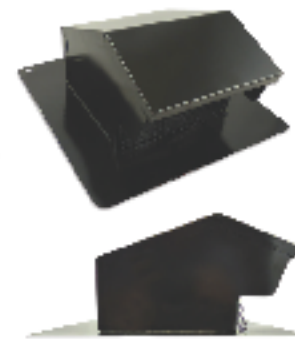


**Hood Size** H: 10" W: 10.6" D: 4.6"

### Metal Roof Jack/Roof Mount Exhaust Vent

The Roof Jack/Roof Mount Exhaust Vent is constructed with 26 gauge galvanized steel with a black powder coated finish. With a removable 1/4" x 1/4" screen and back draft flapper, the Jack/Vent is available with a 4" collar and flush.

\*Remove screen for dryer applications.



**Sizes** 18.75" & 11"  
**Colours** Black