



J-BLOCK VENT HOOD

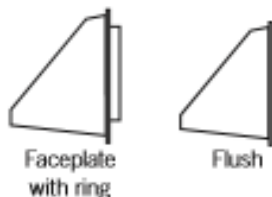
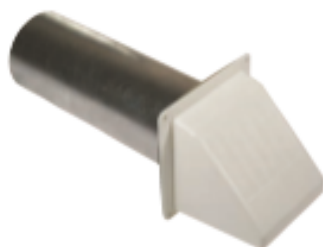
- Plastic hood for brick, siding & stucco applications
- Weighted design helps prevent wind noise and animal entry.
- 11" tailpipe included
- 7.5" wide by 8.5" tall face
- Made in Canada



Diameter	Color	Part #	Qty	Package
With 11" Tailpipe:				
Reversible trim ring adjusts from 0 to 1/2":				
4"	White	111705	12	bulk
	Brown	111712	12	bulk
Reversible trim ring adjusts from 1/2" to 1.15":				
4"	White	111706	12	bulk
	Brown	111713	12	bulk
Faceplates only:				
Reversible trim ring adjusts from 0 to 1/2":				
4"	White	111714	12	bulk
	Brown	111715	12	bulk
Reversible trim ring adjusts from 1/2" to 1.15":				
4"	White	111716	12	bulk
	Brown	111717	12	bulk

PWM113 WIDE MOUTH HOOD

- 11" fully assembled, riveted tailpipe
- Aluminum trim plate
- Back-draft flapper
- Wide mouth plastic hood

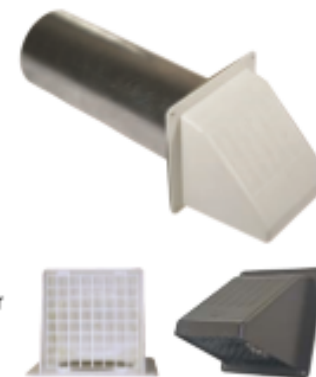


Diameter	Color	Part #	Qty	Package	UPC
3"	White	111243	8	bulk	•
	Brown	111378	8	bulk	•
4"	White	010179	6	Display Tray	•
	White	110164	8	Display Card	•
	White	110113	8	bulk	•
	White	110330	4	ind. box	•
	Brown	110410	8	Display Card	•
	Brown	110177	6	Display Tray	•
	Brown	110284	8	bulk	•
	Brown	110332	4	ind. box	•
Faceplate with ring:					
3"	White	111373	8	bulk	
	Brown	111374	8	bulk	
4"	White	110119	8	bulk	
	White	010723	336	skid (gaylord)	
	Brown	110285	8	bulk	
	Brown	010724	336	skid (gaylord)	
Faceplate for flush installation (no ring):					
4"	White	110766	8	bulk	
	White	010768	392	skid (gaylord)	
	Brown	110767	8	bulk	
	Brown	010769	392	skid (gaylord)	

PWM113 BIRD GUARD HOOD

- 11" fully assembled, riveted tailpipe
- Aluminum trim plate
- Back-draft flapper
- Wide mouth plastic hood
- 1/2" x 1/2" pest grid
- Snaps in and removable for cleaning.

* This hood is not recommended for dryer venting, but if so used, check screen frequently for lint build-up.



Diameter	Color	Part #	Qty	Package	UPC
3"	White	111365	8	bulk	
	Brown	111368	8	bulk	
4"	White	111381	8	bulk	
	White	111411	6	Display Tray	•
	Brown	111384	8	bulk	
Faceplate with ring:					
3"	White	111375	8	bulk	
	Brown	111376	8	bulk	
4"	White	111732	8	bulk	
	Brown	111733	8	bulk	
Faceplate for flush installation (no ring):					
4"	White	111391	8	bulk	
	Brown	111392	8	bulk	

PEST GUARD

- Universal cap fits over most thru wall vent hoods
- Hinge action allows for easy cleaning.
- This product is made in Canada.



Color	Part #	Qty	Package	UPC
Fits over most 4" diameter through wall hoods				
White	111572	12	bulk	
	111573	12	Display Label	

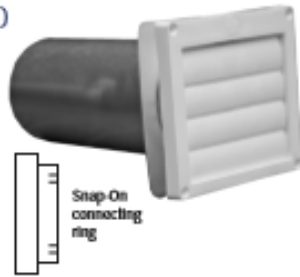
AIR FORCE 1

SALES & MARKETING LTD.



PML282 LOUVERED PLASTIC HOOD WITH TAILPIPE

- 11" tailpipe
- Aluminum trim plate
- Fully assembled
- Faceplate has 4 louvers



Diameter	Color	Part #	Qty	Package	UPC
3"	White	110280	12	bulk	
	White	110334	4	ind. box	•
	Brown	110281	12	bulk	
4"	White	111412	12	Display Card	•
	White	110282	12	bulk	•
4"	White	110336	4	ind. box	•
	Brown	111414	12	Display Card	•
4"	Brown	110283	12	bulk	•
	Brown	110338	4	ind. box	•
Unassembled:					
4"	White	111692	12	bulk	
	Brown	111734	12	bulk	
Louver replacements					
4"	White	110003	100	bulk	
	Brown	110004	100	bulk	

AFL535 MICRO LOUVER EAVE VENT

- Aluminum
- Fixed louvered screen
- Installs flush

* This versatile eave vent is good for bathroom fan venting or fresh air intakes. Formerly the "Pro-Vent™ Eave Vent".



Diameter	Part #	Qty	Package
Faceplate only:			
3"	110272	20	bulk
4"	110273	20	bulk
With 3 ft V230 flexible aluminum pipe:			
3"	110274	16	bulk
4"	110275	16	bulk
With 3" collar:			
3"	110556	8	bulk
4"	110555	8	bulk

PML282 LOUVERED PLASTIC HOOD WITHOUT TAILPIPE

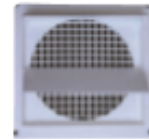
- Screens are 1/4" x 1/4" molded grid
- Hoods with screens are not recommended for dryer venting.



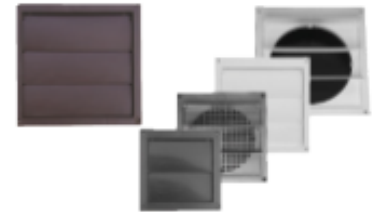
snap-on connecting ring



flush



with screen



SNAP ON RING

Diameter	Color	Part #	Qty	Package
3"	White	110749	12	bulk
	Brown	110872	12	bulk
4"	White	111424	12	Display Card
	White	110286	12	bulk
4"	Brown	111545	12	Display Card
	White	110287	12	bulk
5"	White	110830	12	bulk
	Brown	110834	12	bulk
6"	White	110838	12	bulk
	Brown	110842	12	bulk
7"	White	110846	12	bulk
	Brown	110850	12	bulk
8"	White	110854	12	bulk
	Brown	110858	12	bulk

RING WITH SCREEN

Diameter	Color	Part #	Qty	Package
3"	White	110340	12	bulk
	Brown	110342	12	bulk
4"	White	110288	12	bulk
	Brown	110292	12	bulk
5"	White	110831	12	bulk
	Brown	110835	12	bulk
6"	White	110839	12	bulk
	Brown	110843	12	bulk
7"	White	110847	12	bulk
	Brown	110851	12	bulk
8"	White	110855	12	bulk
	Brown	110859	12	bulk

FLUSH

Diameter	Color	Part #	Qty	Package
3"	White	111149	24	bulk
	Brown	111151	24	bulk
4"	White	111153	24	bulk
	Brown	111155	24	bulk
5"	White	110832	12	bulk
	Brown	110836	12	bulk
6"	White	110840	12	bulk
	Brown	110844	12	bulk
7"	White	110848	12	bulk
	Brown	110852	12	bulk
8"	White	110856	12	bulk
	Brown	110860	12	bulk

FLUSH WITH SCREEN

Diameter	Color	Part #	Qty	Package
4"	White	110291	24	bulk
	Brown	110294	24	bulk
5"	White	110833	12	bulk
	Brown	110837	12	bulk
6"	White	110841	12	bulk
	Brown	110845	12	bulk
7"	White	110849	12	bulk
	Brown	110853	12	bulk
8"	White	110857	12	bulk
	Brown	110861	12	bulk



GRV635 BLACK



- 26 gauge galvanized steel
- Black powder coat finish
- Removable 3/4" x 3/4" screen
- Back draft flapper
- Available with 4" collar and flush



012635

Diameter	Part #	Qty	Package	Opening	UPC
4"	012635	1	Ind. Box	with collar	•
	012636	1	Ind. Box	flush	•
6-8"	012634	1	Ind. Box	flush	•

PFL812 MINI LOUVER

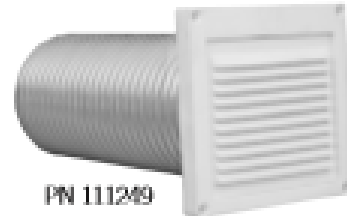
- Polypropylene molded plastic
- Screens are 3/4" x 3/4" molded grid
- Fixed louvers
- 4 mounting holes
- Works for thru-wall as well as eave venting



PN 110681



PN 110812



PN 111249

WITH 3" TAIL

Diameter	Color	Part #	Qty
3"	White	110695	12
	Brown	110681	12
4"	White	110812	12
	Brown	110519	12

WITH 3' FLEX TAIL

Diameter	Color	Part #	Qty
3"	White	111251	12
	Brown	110977	12
4"	White	111249	12
	Brown	110973	12

WITH 4" TAIL

Diameter	Color	Part #	Qty
6"	White	111918	4

WITH 10" TAIL

Diameter	Color	Part #	Qty
3"	White	110893	12
	Brown	110683	12
4"	White	110813	12
	Brown	110971	12

FLUSH MOUNT

Diameter	Color	Part #	Qty
3"	White	110975	12
	Brown	110976	12
4"	White	110751	12
	Brown	110752	12
5"	White	110896	12
	Brown	111005	12
6"	White	110900	12
	Brown	111503	12
7"	White	110904	12
	Brown	111013	12
8"	White	110908	12
	Brown	111017	12

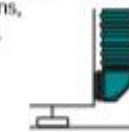
FLUSH WITH SCREEN

Diameter	Color	Part #	Qty
5"	White	110897	12
	Brown	111006	12
6"	White	110901	12
	Brown	111010	12
7"	White	110905	12
	Brown	111014	12
8"	White	110909	12
	Brown	111018	12

CLOSE ELBOW®



- Turns 90° within 4"
- One male rotating snap-lock™ collar
- One female rotating snap-lock™ collar
- Best choice for 90° turns, especially on the dryer.



4" Diameter
110108

WALL OFFSET ELBOW®



- Turns 90° within 4"
- One male rotating snap-lock™ collar
- One female snap-lock™ collar
- Use when outlet pipe in wall protrudes up to 2.5" and cannot be trimmed.



4" Diameter
110109

DRYER OFFSET ELBOW®



- Turns 90° within 4"
- One female rotating snap-lock™ collar
- One male snap-lock™ collar
- Use when outlet pipe on dryer protrudes up to 2.5" and cannot be trimmed.
- Can also be used on wall outlet pipe if pipe is too large for Wall Offset Elbow®



4" Diameter
110110

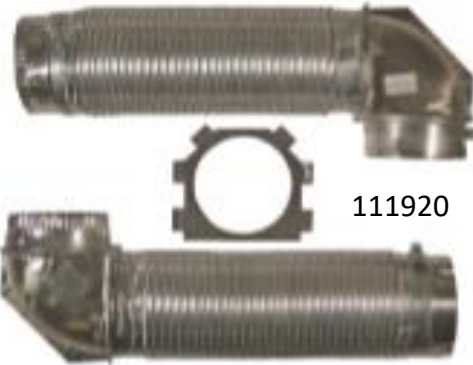
AIR FORCE 1

SALES & MARKETING LTD.



OVER-THE-TOP® SNAP-LOCK™ DRYER VENT KIT

- Installs in 4 1/2", when wall pipe is trimmed flush and wall plate is used. Swivel collars on elbows allow dryer to be pulled away from wall for cleaning without disconnecting.
- Kit contains:
 - 2 - 4 ft pipe sections
 - 2 - Close Elbows® (attached)
 - 2 - clamps for wall and dryer connections
 - 1 - wall plate for flush clearance
- Total kit length: 8 feet
- Pipe snap-locks together, as final step



111920

ZERO PERISCOPE™

- Available in 0-5 and 0-18 lengths
- Use where outlets overlap or are very close
- Baffles help direct airflow in 3-5" situations
- Sections are not reversible



110146 w/Baffle

18-29" PERISCOPE

- Reaches side of most dryers
- Two piece assembly



110114

29-50" PERISCOPE

- Reaches top of most dryers
- Four piece assembly



110117

DRYER OUTLET BOX

- One Self trimming unit: 18" wide by 24" high
- Fits all 16" centers 2x4's and 2x6's;
- Six prescored, true 4" diameter knockouts in most common positions
- Six starburst knockouts for gas connections and venting
- Plastic meets UL® standard 94HB tests for flammability



SINGLE BOX 110697

AIR FORCE 1

SALES & MARKETING LTD.

40 IRONSIDE CRESCENT, UNIT 2

TORONTO, ON M1X 1G4

416.299.1300 OR 800.707.6297

ORDERS@AIRFORCE1.CA 647.343.4145 FAX